



Flintshire & Wrexham Community Safety

Partnership Plan 2011/2014



Gwasanaeth Tân ac Achub
Fire and Rescue Service



Prawf Cymru
Wales Probation



GIG
CYMRU
NHS
WALES

Bwrdd Iechyd Prifysgol
Betsi Cadwaladr
University Health Board

Flintshire & Wrexham Community Safety Partnership Plan 2011/2014

Contents

Foreword	Page 1
Flintshire and Wrexham Community Safety Partnerships	Page 2
Our shared priorities for 2011/2014	Page 5
How we will measure success 2011/2014	Page 20
Action plans 2011/2014	Page 22
Delivering a safer community	Page 44

Flintshire & Wrexham Community Safety Partnership Plan 2011/2014

Foreword

Flintshire & Wrexham Community Safety Partnerships are made up of public and voluntary agencies, working together with one common goal – to make our area safe.

As partnerships, we have made real progress in reducing crime, fear of crime and anti-social behaviour. The total number of crimes taking place in our area continues to fall, with total crime levels in Flintshire & Wrexham reducing by 12% in 2010. The number of anti-social behaviour incidents reported to the police is also steadily falling, with levels of anti-social behaviour in 2010 being 10% lower than that experienced the year before.

For the first time the two partnerships have undertaken a joint Partnership Plan for the whole area. This provides a strategic overview of community safety issues in our area, based on long-term trends and emerging issues, and uses this information to confirm our priorities and inform our Action Plans for 2011/2014.

Although there have been considerable crime reduction successes to date, fear of crime and concern over levels of anti-social behaviour continue to be of particular priority for local people. This joint

Partnership Plan sets out how the partnerships will address the priorities identified in the assessment. It sets out why we have identified the issue as a priority, what we will do to address it and how we will know whether we are succeeding.

The joint Partnership Plan provides clear evidence of both Community Safety Partnerships' shared commitment to reducing local levels of crime and disorder in our area.

Our success so far would not have been possible without the enthusiasm and commitment of all of our partners and the communities and we hope that you will continue to work with us to turn our vision into reality for our communities

Colin Everett

Chief Executive
Flintshire County
Council
Chair of Flintshire
CSP



Lee Robinson

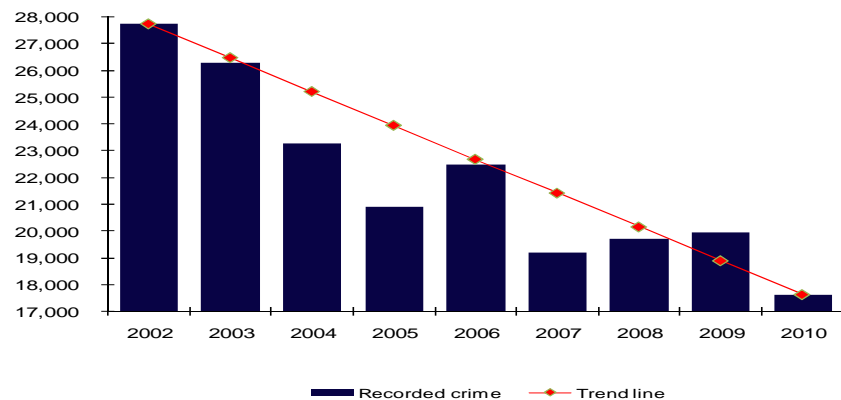
Strategic &
Performance
Director
Wrexham CBC
Chair of Wrexham
CSP



Flintshire & Wrexham Community Safety Partnerships – Priorities for 2011/2014

Flintshire and Wrexham - increasingly safe places

Flintshire and Wrexham are increasingly safe places to live work and visit, with levels of crime steadily reducing. Recorded crime in Flintshire and Wrexham has fallen by 12% since 2009, and by 36% when compared to the levels experienced in 2002.



Although crime levels are reducing, fear of crime and disorder and concern over levels of anti-social behaviour continue to be priorities for local people.

Both Flintshire and Wrexham Community Safety Partnerships are committed to reducing local levels of crime and disorder, improving community safety and reassuring those who live, work or visit the area.

The outcomes we are trying to achieve

The overall aims of Flintshire and Wrexham Community Safety Partnerships remain unchanged. We continue to work together and with our partners to achieve two main outcomes for the residents of Flintshire and Wrexham

- Reducing crime - 'Our area is a safe place to live, work and visit'
- Reducing fear of crime - 'Our area feels like a safe place to live, work and visit'

This document sets out the Community Safety Partnerships' plans to tackle crime, disorder and anti-social behaviour and reduce the fear of crime in Flintshire County and Wrexham County Borough during the period 2011 - 2014.

Flintshire & Wrexham Community Safety Partnerships – Priorities for 2011/2014

Partnerships working to make Flintshire and Wrexham safer

Community Safety Partnerships were established in Flintshire and Wrexham in 1998. They bring together key agencies in each of the local authority areas to work jointly to reduce crime and the fear of crime. In each area the CSP includes the relevant local authority (Flintshire County Council or Wrexham County Borough Council) and:

Statutory partners

- North Wales Police
- North Wales Police Authority
- North Wales Fire and Rescue Service
- Betsi Cadwaladr University Health Board
- Wales Probation

Other partners

- The Welsh Government
- The Home Office
- The local voluntary sector (FLVC and AVOW)
- A range of other public and voluntary sector bodies.

The Partnerships' aim is to make each county a safer place to live, work and visit. This aim links directly into the Community Strategy for each council area where one of the key priorities is to make our communities safer.

Our statutory obligations

Community Safety Partnerships are statutory organisations. The Crime and Disorder Act 1998 makes it a legal requirement for each local authority area to have such a partnership.

Community Safety Partnerships have a legal duty to work with local agencies and organisations to develop and implement strategies to tackle crime and disorder including anti-social and other behaviour adversely affecting the local environment, as well as the misuse of drugs in its area.¹

As part of these statutory duties the Home Office require each Community Safety Partnership to:

- undertake an annual strategic assessment of crime, disorder and anti-social behaviour.
- produce a three year partnership plan which is refreshed annually based on the findings of the strategic assessment.

¹ Crime and Disorder Act 1998 as amended by s97 & s98 Police Reform Act 2002 ; Page 3 s1, Clean Neighbourhoods & Environment Act 2005 and Police & Justice Act 2006

Flintshire & Wrexham Community Safety Partnerships – Priorities for 2011/2014

Flintshire and Wrexham each developed a partnership plan for the period 2008-11, in line with the period of the Government's spending review. However, in 2011 the first joint strategic assessment was undertaken, and following on from that the findings have been used to influence and inform the first joint Flintshire and Wrexham Partnership Plan for the period 2011 to 2014.

Our success to date

Since 2002 there has been a 36% reduction overall in the number of crimes recorded in Flintshire and Wrexham Counties.

2010 saw a reduction in recorded crime of 12% compared to the previous two years.

In 2008, the Home Office Crime Team for Wales (HOCTW) set local performance targets for both Flintshire and Wrexham Community Safety Partnerships for the period of their Partnership plan (2008 to 2011). These were to...

- **Maintain** the low level of serious violent crimes
- **Reduce** assaults in Flintshire by 2%, and Wrexham by 4%
- **Reduce** serious acquisitive crime in Flintshire by 2% and Wrexham by 4%

These targets have been met or bettered in both counties:

- Serious violent crime has reduced in 2010/11 by 12% in Flintshire compared to last year, and by 28% in Wrexham compared to 2008/9.
- Assaults have been reduced by 18% in Flintshire and 4% in Wrexham compared to 2008/9
- Serious acquisitive crime has been reduced by 17% in Flintshire and 7% in Wrexham compared to 2008/9

Key facts about crime and disorder in our area

Total crime - Overall crime rates are low with 61 crimes for every 1,000 residents compared to a Welsh average of 69.

Fear of crime - 2.4% of households have reported actually being the victim of crime in the last year but 11.1% are worried about becoming a victim of crime.

Anti-social behaviour - 11.5% of North Wales respondents to the British Crime Survey stated that anti-social behaviour is a problem in their local area compared to the national average of 16%.

Flintshire & Wrexham Community Safety Partnerships – Priorities for 2011/2014

Our shared priorities for 2011/2014

Generally, residents of Flintshire and Wrexham feel safe, and their perception of crime and anti-social behaviour continues to improve. However, some people and some places in Flintshire and Wrexham continue to suffer disproportionately from crime and fear of crime.

In order for us to continue to make progress both Community Safety Partnerships must build upon the achievements already made, and target those issues of greatest significance for communities in Flintshire and Wrexham. The issues that we plan to prioritise during 2011/2014 are to:

- Reduce the levels of **violent crime** including **domestic and sexual violence**
- Tackle **anti-social behaviour**
- Reduce the levels of **acquisitive crime**
- Reduce **re-offending** by supporting the agencies which actively manage offenders
- Reduce the harm that **substance misuse** causes to communities, families and individuals
- Tackle **hate related crime** and disorder and encourage reporting

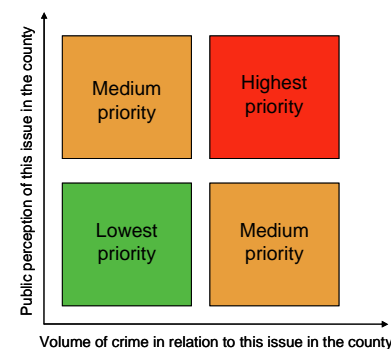
- Engage with communities to provide **re-assurance** and increase **public confidence**

How have we set our priorities?

In January 2011 we undertook a comprehensive strategic assessment of crime, disorder, and anti social behaviour affecting local communities across the two counties during 2010.

As part of this strategic assessment the views of local communities, as well as data from partner organisations, were collected across Flintshire and Wrexham with regard to crime and fear of crime.

The following matrix has been used to assess whether a crime category should be a strategic priority for the Community Safety Partnerships; the matrix takes account of the level of public concern and the actual volume of crime. Using this matrix will ensure the priorities that we set, and initiatives that we develop, are appropriately targeted and address the concerns of our residents



Priority 1: Reduce the level of **violent crime**, including domestic and sexual violence



Why is this a priority ?

Although the volume of violent crime in Flintshire and Wrexham fell during 2010 it is still an issue that impacts significantly on peoples' fear of crime.

1 in 5 violent crimes occurred in or outside licensed premises and over a quarter of all violence against the person in our area was recorded as being alcohol related

There was an increase in the number of sexual violence offences in Flintshire. While incidents of domestic and sexual violence are lower in volume than other violent crime they will be prioritised to ensure this vulnerable victim group continue to be supported.

How will we measure success ?

Outcome 1 : Our area is a safe place to live work and visit (reducing crime)

Strategic priority	Flintshire priority	Wrexham priority	Indicator
Reduce the levels of violent crime including domestic and sexual violence	HIGH	HIGH	Number of recorded violent crimes per 1,000 residents

Priority 1: Reduce the level of **violent crime**, including domestic and sexual violence

What did the strategic assessment tell us ?

- Total violence against the person has decreased by 15% during 2010. The level of most serious violence remains very low, accounting for only 3% of the total incidents of violence against the person in our area.
- The time of offences across Flintshire and Wrexham show increases between 7pm and 2am every night. In Wrexham, there is also an increase between midnight and 1am which is likely to be due to people leaving nightclubs in the town centre.
- A quarter of assaults in Wrexham occurred in the three town centre wards, and a large proportion of the assaults in these town centre wards are fuelled by alcohol, over 20% of all offences are recorded as being alcohol related
- A smaller proportion of assaults in Flintshire are recorded as being alcohol related (16%)
- 26% of domestic violence incidents reported in North Wales are repeat incidents. This compares favourably with our 'most similar group' of police forces where the average level of repeat incidents is 29% and the highest level is 39%.
- Over 30% of sexual violence victims in Wrexham were teenagers aged between 13 and 17 years old, and this category of victim is growing. The largest age category of victims in Flintshire was also teenagers, with 22% of victims being between 14 and 15 years old.

Over the coming year we will :

Violence against the person

- Co-ordinate multi-agency campaigns to coincide with events and times of year which are known to present an increased risk of alcohol fuelled violent crime.
- Continue to use licensing powers to reduce harmful sales of alcohol and promote a safe night time economy
- Encourage positive participation in Community Safety initiatives from licensed premises through continued support of Nightsafe and Pubwatch schemes.

Domestic abuse & sexual violence

- Promote training and support for professionals to ensure that cases are appropriately identified and referred, and provide ongoing support to the Multi Agency Risk Assessment Conference (MARAC).
- Raise awareness of domestic abuse and sexual violence through the development of an integrated campaign challenging attitudes and promoting reporting
- Implement strategic and operational support for the planning and implementation of the local Sexual Violence Action Plan and work with the Local Safeguarding Children's Board to implement the Sexual Exploitation Risk Assessment Framework (SERAF)

Priority 2: Tackle anti-social behaviour



Why is this a priority ?

There has been a reduction in the level of anti-social behaviour reported to the police and both councils during 2010.

However ,despite strong performance, anti-social behaviour continues to be an issue that the majority of residents in Flintshire and Wrexham are concerned about and so remains a key priority for the partnerships.

How will we measure success ?

Outcome 1 : Our area is a safe place to live work and visit (reducing crime)

Strategic priority	Flintshire priority	Wrexham priority	Indicator
Tackle anti-social behaviour	HIGH	HIGH	Number of reported ASB incidents per 1,000 residents

Priority 2: Tackle anti-social behaviour

What did the strategic assessment tell us ?

- The Crime and Disorder Act 1998 defines ASB as: 'behaviour that caused or was likely to cause harassment, alarm or distress to one or more persons, not of the same household as the perpetrator'
- North Wales Police define ASB as 'behaviour by an individual or group that results in; another party feeling personally threatened; creates a public nuisance; has a detrimental impact upon the environment or has a detrimental effect upon the quality of life of an individual or the community as a whole'
- Levels of anti-social behaviour have fallen steadily over the last 4 years which indicates that the targeted intervention undertaken by both CSP's are working well, and should be continued.
- The majority (67%) of ASB incidents reported to the police during 2010 were in relation to rowdy nuisance. 69% of rowdy nuisance complaints were received from Friday evening to Sunday evening. And peaked between the hours of 7pm and 11pm.
- Vehicle related nuisance was another significant category of ASB during 2010, accounting for 7% of the total incidents reported. This category includes the anti-social use of cars, motorbikes, and mini-motorbikes.

- ASB continues to be most significant in wards associated with a strong night time economy.
- Perpetrators of ASB tend to be male (88%), aged 19-29 (46%).

Over the coming year we will :

- Continued development of the tactical multi-agency meeting for the co-ordination and delivery of a range of activities including support for vulnerable and repeat **victims**, enforcement against **offenders** and action against identified problem **locations**.
- Co-ordination of the referral and intervention process to reduce the number of young people who are repeatedly involved in anti-social behaviour, using restorative resolutions, substance misuse referral, diversionary and preventative interventions
- Enforcement and education activity co-ordinated through the multi-agency tactical meeting to target locations where alcohol related antisocial behaviour is a problem.
- Support the enforcement of legislation to prevent the inappropriate sale of alcohol in licensed premises (for example to minors or intoxicated)
- Community Safety support for environmental enforcement and educational operations run by the respective council environmental protection departments

Priority 3: Reduce the level of acquisitive crime



Why is this a priority ?

There has been an overall reduction in the level of acquisitive crime in Flintshire and Wrexham during 2010, although there has been a small increase in the number of domestic burglaries in Wrexham.

Acquisitive crime, particularly domestic burglary, continues to be an issue that impacts upon residents fear of crime in both counties and should therefore remain a priority for 2011/2014

How will we measure success ?

Outcome 1 : Our area is a safe place to live work and visit (reducing crime)

Strategic priority	Flintshire priority	Wrexham priority	Indicator
Reduce the levels of acquisitive crime	MEDIUM	HIGH	Number of serious acquisitive crimes per 1,000 residents

Priority 3: Reduce the level of acquisitive crime

What did the strategic assessment tell us ?

- Domestic burglary reduced by 7% (53 crimes) in our area during 2010. However, during 2010 there was an increase of 2.5% in Wrexham County Borough compared to 2009. In Flintshire there was a decrease of 65 offences in comparison to 2009 and a 21% improvement.
- Seasonal increases were seen in the volume of domestic burglaries during the months of October and November in both Flintshire and Wrexham counties, a similar trend occurring in 2009.
- All of the detected motor vehicle theft offenders in Wrexham and 88% of the offenders in Flintshire were male. The majority of offenders in both counties were under 20 years old, with the youngest offender being aged 14.
- 17% of all property stolen from motor vehicles during 2010 was vehicle audio equipment. Other prevalent items include power tools (16%), vehicle parts and accessories such as wheels, wing mirrors and body trim (11%), and satellite navigation systems (8%).
- There were just 29 reported incidences of distraction burglary in the area during 2010. All victims were over 65 years old, and 86% were female. In the majority of distraction burglaries the offender purported to be working for a utilities company to secure access to the property.

Over the coming year we will :

Domestic burglary

- Maintain and develop our strong links with Neighbourhood Watch, including the use of the Online Watch Link (OWL) tool to deliver crime alerts to local watch members.
- Co-ordinate multi-agency campaigns in response to emerging burglary “hot-spots” or seasonal risk factors. For example, open windows during the summer period and pre-Christmas alerts
- Maintain and develop our “target hardening”² services for vulnerable households.

Vehicle crime

- Co-ordinate the development and delivery of a range of targeted interventions including tackling vehicle security, decoy cars, mobile automated number plate recognition and vehicle crime prevention packs
- Work with young people who have previously been involved in vehicle crime through the Motor Education Scheme to reduce the risk of them re-offending
- Continue our support for vehicle security messages in selected car parks and safer car park schemes across the area

² Target hardening is increasing household security through advice and/or the provision of security measures.

Priority 4: Reduce re-offending by supporting the agencies which actively manage offenders



Why is this a priority ?

The rate of re-offending of adults in Flintshire is significantly lower than the national average. However, the re-offending rate amongst young people in Flintshire is higher than the average for both North Wales and Wales as a whole.

Re-offending rates of both adults and young people in Wrexham County Borough have improved during 2010. However, adult re-offending rates in Wrexham remain significantly higher than the Welsh national average.

How will we measure success ?

Outcome 1 : Our area is a safe place to live work and visit (reducing crime)

Strategic priority	Flintshire priority	Wrexham priority	Indicator
Reduce re-offending by supporting the agencies which actively manage offenders	MEDIUM	HIGH	Adult Re-offending rate (Probation) Young People's Re-offending rate (YJS)

Priority 4: Reduce re-offending by supporting the agencies which actively manage offenders

What did the strategic assessment tell us ?

- Community Safety Partnerships have a statutory duty to formulate and implement a strategy to reduce re-offending by both adults and young people.
- The September 2010 rate of adult re-offending, whilst under the supervision of the Probation service, was 7.9% in Flintshire and 14.2% in Wrexham. This compares to a national average of 11.1%, and a North Wales average of 10.9%
- The 2010 rate of re-offending of young people in Wrexham has improved by 1%, while in Flintshire it has deteriorated by 23% in comparison to 2005.
- The Prolific and Priority Offenders scheme in Flintshire and Wrexham has a number of factors in common, including core management arrangements and key service providers (Police & Probation). Despite this, there is a difference in the two areas 2010 performance against the 2007 baseline position. Offenders in the Wrexham PPO scheme had a 16% increase in re-offending behaviour. In contrast, offenders on the Flintshire PPO scheme have achieved a 42% reduction in the number of convictions. The challenge for 2011/2014 will be to build on the current review of provision to improve and develop performance, in particular in terms of the Wrexham adult re-offending rates.

Over the coming year we will :

- Continue to work at a strategic level across Flintshire and Wrexham to tackle re-offending across the area
- Coordinate multi-agency action plans in response to emerging issues based on an assessment of needs.
- We will performance manage the Prolific and Priority Offenders' scheme, and take the necessary action to improve our performance
- We will continue our support for the project to work with identified prolific offenders in the scheme.
- Continue to work at the strategic level to support the development of the Integrated Offender Management (IOM) scheme

Priority 5: Reduce the harm that **substance misuse** causes to communities, families and individuals.



Why is this a priority ?

Flintshire and Wrexham continue to have lower than average rates of estimated substance misuse in comparison to other Welsh counties. However, residents remain concerned about substance misuse and the impact that it has as a catalyst for other crimes.

How will we measure success ?

Outcome 1 : Our area is a safe place to live work and visit (reducing crime)

Strategic priority	Flintshire priority	Wrexham priority	Indicator
Reduce the harm that substance misuse causes to communities, families and individuals	MEDIUM	MEDIUM	Adult waiting time between assessment and treatment Young people waiting time between referral and assessment (YJS)

Priority 5: Reduce the harm that **substance misuse** causes to communities, families and individuals.

What did the strategic assessment tell us ?

- Dealing and taking illicit drugs are criminal offences in their own right. In addition, drugs and alcohol misuse are often major contributory factors in offending behaviour. Tackling the underlying substance misuse issues also aims to achieve reductions in serious violent crime, repeat domestic abuse and the anti-social behaviour and crimes that matter most to local people.
- There were 912 recorded drugs offences in our area during 2010 this is a 10% increase on the number recorded during 2009, but remains slightly lower than the number recorded in 2008 and before. Only 4% of the crimes recorded during 2010 related to the supply of drugs.
- The majority of people referred for treatment for both alcohol and drugs in our area are between the ages of 30 and 50. However, Health Solutions Wales estimate that the rate of substance misuse is as high amongst the 20-30 age group. This suggests that we need to continue to work hard to target our services at younger people.
- In recent research undertaken by the National Public Health Service for Wales, 36% of 16 to 24 year old in Wales reported binge drinking in the last week, and 52% reported drinking above guideline levels.

Over the coming year we will :

- Commission and performance manage services to deliver a range of education and early intervention initiatives to young people
- Support licensing enforcement and education activity focused on underage sales of alcohol at on and off licences and proxy purchasing
- Promote and support educational campaigns to target proxy sales, and other forms of inappropriate supply of alcohol to young people
- Commission and performance manage services to deliver a range of interventions including, where appropriate, advice and information, drop-ins, day care, residential rehabilitation, recovery, after care and support services.
- Commission and performance manage services to deliver a range of support to young carers, siblings and families of substance misusers

Priority 6: Tackle hate related crime and disorder and encourage reporting



Why is this a priority ?

One of our key aims is to be mindful that there are some vulnerable groups who may be victims or potential victims of crime but who do not report crime or voice their opinions through community consultation through fear or other barriers. We should ensure that these groups continue to be fully represented in our priority setting.

The number of hate crimes reported to police in Flintshire has decreased in the year, and remains significantly lower than the number experienced by similar partnerships

The volume of hate crime reported in Wrexham during 2010 to the police or third party reporting centres continues to be a concern

How will we measure success ?

Outcome 1 : Our area is a safe place to live work and visit (reducing crime)

Strategic priority	Flintshire priority	Wrexham priority	Indicator
Tackle hate related crime and disorder and encourage reporting	MEDIUM	MEDIUM	Total number of hate related crimes and incidents reported

Priority 6: Tackle hate related crime and disorder and encourage reporting

What did the strategic assessment tell us ?

- Hate crime is any crime “*which is perceived by the victim or any other person to be based upon prejudice towards or hatred of an identifiable group of people*”. For example, a target group that is identified by their **race, religion, sexuality, or disability**.
- As with other under-reported crime, when tackling the issue of hate related crime part of the approach needs to include increasing confidence in and access to reporting. Wrexham CSP has worked with colleagues in Community Cohesion to improve reporting over a number of years. Within this development context, it is no surprise that reports of hate crime in Wrexham have increased.
- During 2010 there were 77 hate related offences reported to the police in Wrexham and 54 reports of hate crime were made at third party reporting centres in Wrexham County Borough. Of the latter 5.5% were identified as homophobic and 5.5% disability hate crime.
- During 2010 there were 29 hate crime offences reported to the police in Flintshire
- 81% of hate crimes reported to the police in our area were racially motivated, with homophobic related offences being the next most prevalent type of hate crime, at 14% of the total.

Over the coming year we will :

- We will continue to participate in strategic planning and operational activity to improve community cohesion, support victims of hate crime and deal with perpetrators.
- We will work to increase opportunity and accessibility for victims to report hate crime
- We will continue to support community cohesion teams to deliver targeted campaigns and publicity aimed at increasing awareness, supporting victims and bringing perpetrators to justice

Priority 7: Engage with the community to provide re-assurance and increase public confidence



Why is this a priority ?

While there is ongoing improvement in actual crime levels, there are a disproportionate, number of people who feel that there is a problem with crime and anti-social behaviour in the area. This is known as the ‘perception gap’ and is an issue nationally with two thirds to three quarters of people surveyed annually feeling that reported crime is rising, when in fact it has fallen consistently over the past decade

Both Flintshire and Wrexham Community Safety Partnerships need to put a greater emphasis on reducing the fear of crime in line with the actual reductions in crime they are achieving

How will we measure success ?

Outcome 2 : Our area feels like a safe place to live work and visit

Strategic priority	Flintshire priority	Wrexham priority	Indicator
Engage with the community to provide re-assurance and increase public confidence	HIGH	HIGH	% respondents to NWP “confidence survey” who consider crime and anti-social behaviour is being dealt with by police & council

Priority 7: Engage with the community to provide re-assurance and increase public confidence

What did the strategic assessment tell us ?

- 2.1% of Flintshire and Wrexham residents have reported being the victim of personal crime in the last year but the most recent British crime survey indicates that 3.9% think they are likely to be a victim of this kind of crime.
- 2.4% of the households in Flintshire and Wrexham have reported being a victim of crime in the last year, but 11.1% of people think their household is likely to experience crime
- 87% of residents in Wrexham and 80% in Flintshire agreed that crime and anti-social behaviour was being dealt with effectively by North Wales Police and the local councils
- The findings of the police confidence survey, revealed that people across the two councils, identified their main concerns were:
 - Careless and dangerous driving
 - Young people hanging around the streets
 - People using or dealing drugs
 - Rubbish or litter lying around
 - Vandalism, graffiti to property or vehicles

Over the coming year we will :

- Co-ordinate key campaigns in response to issues identified by the CSP action groups. For example, seasonal campaigns and operational campaigns to highlight key issues and support crime reduction initiatives and reinforce positive messages about community safety in the area.
- Develop, implement, monitor and review a programme of community consultation and engagement. Including public access to community safety information; community networks; web based communications and involving the community in campaigns and consultation exercises
- Develop, implement, monitor and review the local application of the “Prevent” element of the Government's anti-terrorism strategy in line with Home Office Guidance

Flintshire & Wrexham Community Safety Partnerships – Measuring Success

How we will measure our success 2011/2014

The Community Safety Partnerships have set two outcomes – clear statements of what we want to achieve. These outcomes and the indicators that will let us know if we achieve them are shown below

- Reducing crime - 'Our area is a safe place to live, work and visit'
- Reducing fear of crime - 'Our area feels like a safe place to live, work and visit'

The outcomes we want and indicators of our success:

Outcome 1 : Our area is a safe place to live work and visit (reducing crime)

Indicator	Detailed description
Total crime	The total number of recorded crimes in each council area per annum for every 1,000 residents

Outcome 2 : Our area feels like a safe place to live work and visit (reducing the fear of crime)

Indicator	Detailed description
Public confidence	% of respondents to the North Wales Police local confidence survey who feel that 'the police and their local council are dealing with crime and anti-social behaviour'

Flintshire & Wrexham Community Safety Partnerships – Measuring Success

Outcome 1 : Our area is a safe place to live work and visit (reducing crime)

Strategic priority	Flintshire	Wrexham	Indicator
Reduce the levels of violent crime including domestic and sexual violence	HIGH	HIGH	Number of recorded violent crimes per 1,000 residents
Tackle anti-social behaviour	HIGH	HIGH	Number of reported ASB incidents per 1,000 residents
Reduce the levels of acquisitive crime	MEDIUM	HIGH	Number of serious acquisitive crimes per 1,000 residents
Reduce re-offending by supporting the agencies which actively manage offenders	MEDIUM	HIGH	Adult re-offending rate (Probation) Young People re-offending rate (YJS)
Reduce the harm that substance misuse causes to communities, families and individuals	MEDIUM	MEDIUM	Adult waiting time between assessment and treatment. Young people waiting time between referral and assessment (YJS)
Tackle hate related crime and disorder and encourage reporting	MEDIUM	MEDIUM	Total number of hate related crimes and incidents

Outcome 2 : Our area feels like a safe place to live work and visit

Engage with the community to provide re-assurance and increase public confidence	HIGH	HIGH	% respondents to NWP “confidence survey” who consider crime is being dealt with by police & council
--	-------------	-------------	---

2011/2014 Action Plans

Priority 1 – Reduce the levels of violent crime including domestic & sexual violence

How will we measure success ?

Outcome 1 : Our area is a safe place to live work and visit (reducing crime)

Strategic priority	Flintshire priority	Wrexham priority	Indicator
Reduce the levels of violent crime including domestic and sexual violence	HIGH	HIGH	Number of violent crimes per 1,000 residents

Where are we now ?

- Total violence against the person across Flintshire and Wrexham has reduced by 15% between 2009 and 2010, with a 16% reduction in Flintshire and 14% in Wrexham County Borough.
- The level of domestic abuse reported to the police has remained fairly stable since 2008 while in Wrexham there appears to have been a slight reduction in the number of offences recorded. The rate of repeat referrals to the Multi Agency Risk Assessment Conference (MARAC) has remained fairly steady in both counties over the last three years at around 25% to 27%

2011/2014 Action Plans

Priority 1 – Reduce the levels of violent crime including domestic & sexual violence

Violence against the person

By March 2014 we will	Indicator	Flintshire Baseline 2010/11	Wrexham Baseline 2010/11	Key actions
.... maintain the low level of serious violent crimes in Flintshire & Wrexham	Number of serious violent crimes per 1,000 residents	0.4	0.38	Co-ordinate multi-agency campaigns to coincide with events and times of year which are known to present an increased risk of alcohol fuelled violent crime.
				Encourage positive participation in Community Safety initiatives from licensed premises through continued support of Nightsafe and Pubwatch schemes.
.... reduce assaults in Flintshire and Wrexham	Number of assaults with less serious injury per 1,000 residents	4.4	6.57	Continue to use licensing powers to reduce harmful sales of alcohol and promote a safe night time economy
				Encourage positive participation in Community Safety initiatives from licensed premises through continued support of Nightsafe and Pubwatch schemes.

2011/2014 Action Plans

Priority 1 – Reduce the levels of violent crime including domestic & sexual violence

Domestic abuse

By March 2014 we will	Indicator	Flintshire Baseline 2010/11	Wrexham Baseline 2010/11	Key actions
.... reduce the number of victims who suffer repeat incidents of domestic abuse.	% Repeat referrals to MARAC (CAADA data)	25.5% ³	27.5% ³	Provide ongoing support to the Multi Agency Risk Assessment Conference (MARAC) which considers high risk cases
	% of victims of domestic abuse who are repeat victims (Police data)	TBC	TBC	Continue to offer a comprehensive target hardening service, including the timely fitting of any required equipment, particularly in support of high risk victims.
.... increase the number of domestic abuse incidents reported	Total number of domestic abuse incidents in Flintshire and Wrexham	TBC	TBC	Raise awareness of domestic abuse and sexual violence through an integrated campaign challenging attitudes and promoting reporting, including by underrepresented groups
				Increase the number of victims accessing support services
.... increase the number of domestic violence incidents which are brought to justice.	% of domestic violence incidents which are brought to justice	TBC	TBC	Continue to provide an Independent Domestic Abuse Advocacy Service (IDVA) to support victims through the Criminal Justice System.
	Multi-agency referral rate to MARAC	42.5% ³	29.9% ³	Promote training and support for professionals to ensure that cases are appropriately identified and referred to MARAC

³ CAADA Data Jul 2010-Jun 2011

2011/2014 Action Plans

Priority 1 – Reduce the levels of violent crime including domestic & sexual violence

Sexual violence

By March 2014 we will	Indicator	Flintshire Baseline 2010/11	Wrexham Baseline 2010/11	Key actions
.... Increase the number of serious sexual offences brought to justice	% of serious sexual offences which are brought to justice	TBC	TBC	Participation in sub-regional and regional joint working initiatives to improve the impact on confidence in the Criminal Justice System
				Promote and support the development of the Sexual Abuse Referral Centre (SARC) and linked services
.... Reduce the number of young people who are victims of sexual violence	% of victims of sexual violence who are between 13 and 17 years old	TBC	TBC	Co-ordinate targeted educational work with young people, linked to the Children and Young People's Partnership and Children Services, regarding respect and risk in order to increase awareness of the risks of becoming a victim and prevent offending
				Support the Local Safeguarding Children's Board to implement the Sexual Exploitation Risk Assessment Framework (SERAF)
				Support and promote training for professionals to respond appropriately to young people at risk of sexual violence

2011/2014 Action Plans

Priority 2 – Tackle anti social behaviour

How will we measure success ?

Outcome 1 : Our area is a safe place to live work and visit (reducing crime)

Strategic priority	Flintshire priority	Wrexham priority	Indicator
Tackle anti-social behaviour	HIGH	HIGH	Number of ASB incidents per 1,000 residents

Where are we now ?

- Between 2007 and 2010 antisocial behaviour reported to the police reduced significantly from 11,107 incidents to 8,200 in Wrexham, a reduction of 26%. In Flintshire over the same period it fell by 18.5%
- Criminal damage reported to the police has also reduced in both counties. In Flintshire it has fallen by 36% since 2008 (with a 21% reduction between 2009 and 2010). In the same period it fell in Wrexham by 12.5%
- In April 2011 the Home Office introduced a new classification system for Anti-Social Behaviour to allocate incidents to one of three categories - Personal, Nuisance and Environmental. This means that historical data prior to April 2011 is not comparable and new baselines will have to be set.

2011/2014 Action Plans

Priority 2 – Tackle anti social behaviour

Rowdy nuisance

By March 2014 we will	Indicator	Flintshire Baseline 2010/11	Wrexham Baseline 2010/11	Key actions
.... Reduce the number of anti-social behaviour incidents	Number of anti-social behaviour incidents per 1,000 residents	To be established	To be established	Continued development of the tactical multi-agency meeting for the co-ordination and delivery of a range of preventative and diversionary activities including support for vulnerable and repeat victims , enforcement against offenders and action against identified problem locations
				Co-ordination of the referral and intervention process to reduce the number of young people who are repeatedly involved in anti-social behaviour, using interventions as restorative resolutions, substance misuse referral, diversionary and preventative interventions
... Reduce alcohol related ASB	Number of alcohol related ASB incidents recorded by police...	To be established	To be established	Co-ordinate enforcement and education activity through the multi-agency tactical meeting to target locations where alcohol related antisocial behaviour is a problem
				Support the enforcement of legislation to prevent the inappropriate sale of alcohol in licensed premises (for example to minors or the intoxicated)

2011/2014 Action Plans

Priority 2 – Tackle anti social behaviour

Criminal and environmental damage

By March 2014 we will	Indicator	Flintshire Baseline 2010/11	Wrexham Baseline 2010/11	Key actions
.... Reduce the number of incidents of criminal damage	Number of criminal damage incidents per 1,000 residents	10.55	17.31	Operation Gingerbread will ensure that additional security is in place for schools in both counties during the holiday periods
				Support and co-ordinate the delivery of diversionary activity for young people who would not otherwise be engaged in constructive activities during the school holiday periods
				Specific enforcement and preventative interventions in hotspot areas identified by analysis, and community intelligence
				Community Safety support for environmental enforcement and educational operations run by the respective council environmental protection departments

2011/2014 Action Plans

Priority 3 – Reduce levels of acquisitive crime

How will we measure success ?

Outcome 1 : Our area is a safe place to live work and visit (reducing crime)

Strategic priority	Flintshire priority	Wrexham priority	Indicator
Reduce the levels of acquisitive crime	MEDIUM	HIGH	Number of serious acquisitive crimes per 1,000 residents

Where are we now ?

- Acquisitive crime includes burglary, theft of and from a vehicle and personal or business robbery.
- Between 2009 and 2010 in Flintshire and Wrexham the overall volume of these crimes reduced by 15%.
- In Flintshire there have been significant reductions in both burglary (down 21%) and thefts from vehicles (40%), while Wrexham has seen vehicle theft reduced by 20%
- The rate of serious acquisitive crime in Flintshire was 5.07 per thousand population, and 9.39 per thousand in Wrexham.

2011/2014 Action Plans

Priority 3 – Reduce levels of acquisitive crime

Domestic burglary

By March 2014 we will	Indicator	Flintshire Baseline 2010/11	Wrexham Baseline 2010/11	Key actions
.... Reduce domestic burglary	Number of domestic burglaries per 1,000 residents	3.5	8.6	Maintain and develop our strong links with Neighbourhood Watch, including the use of the Online Watch Link (OWL) tool to deliver crime alerts to local watch members.
				Co-ordinate multi-agency campaigns in response to emerging burglary “hot-spots” or seasonal risk factors including promoting increased home security
.... Maintain the low level of distraction burglaries	Number of distraction burglaries per 1,000 residents	0.05	0.19	Maintain and develop our “target hardening” ⁴ services for vulnerable households.

⁴ Target hardening is increasing household security through advice and/or the provision of security measures.

2011/2014 Action Plans

Priority 3 – Reduce levels of acquisitive crime

Vehicle crime

By March 2014 we will	Indicator	Flintshire Baseline 2010/11	Wrexham Baseline 2010/11	Key actions
.... Reduce the number of vehicles which are stolen	Number of thefts of a vehicle per 1,000 residents	1.59	1.84	Co-ordinate the development and delivery of a range of targeted interventions including tackling vehicle security, decoy cars, mobile automated number plate recognition, vehicle crime prevention packs
				Work with young people who have previously been involved in vehicle crime through the Motor Education Scheme to reduce the risk of them re-offending
.... Reduce the number of times property is stolen from a vehicle	Number of thefts from a vehicle per 1,000 residents	1.78	3.47	Continue our support for vehicle security messages in selected car parks and safer car park schemes across the area

2011/2014 Action Plans

Priority 4 – Reduce re-offending by supporting agencies which actively manage offenders

How will we measure success ?

Outcome 1 : Our area is a safe place to live work and visit (reducing crime)

Strategic priority	Flintshire priority	Wrexham priority	Indicator
Reduce re-offending by supporting those agencies which actively manage offenders	MEDIUM	HIGH	Adult re-offending rate (Probation) Young People re-offending rate (YJS)

Where are we now ?

- The rate of reoffending of young people in Wrexham had improved by only 1%, and had deteriorated in Flintshire by 23% comparing rates in December 2010 to the 2005 baseline. This is in contrast to a 20% improvement across Wales as a whole.
- The September 2010 rate of adult re-offending, whilst under the supervision of the Probation service, was 7.9% in Flintshire and 14.2% in Wrexham. This compares to a national average of 11.1%, and a North Wales average of 10.9%

2011/2014 Action Plans

Priority 4 – Reduce re-offending by supporting agencies which actively manage offenders

Adult offender management

By March 2014 we will	Indicator	Flintshire Baseline 2010/11	Wrexham Baseline 2010/11	Key actions
.... Reduce the rate of re-offending of adults	% of offenders managed by Wales Probation in Flintshire and Wrexham who re-offend	7.68%	13.51%	Continue to work at the strategic level across Flintshire and Wrexham to tackle re-offending across the area
				Coordinate multi-agency action plans in response to emerging issues based on assessment of needs
				We will performance manage the Prolific and Priority Offenders' scheme, and take the necessary action to improve our performance
				We will continue our support for the project working with identified prolific offenders in the scheme.
				Continue to support the development of the Integrated Offender Management (IOM) scheme

2011/2014 Action Plans

Priority 4 – Reduce re-offending by supporting agencies which actively manage offenders

Young people offender management

By March 2014 we will	Indicator	Flintshire Baseline 2010/11	Wrexham Baseline 2010/11	Key actions
.... Reduce the rate of re-offending of young people	% of offenders managed by the Youth Justice Service who re-offend	1.49	1.17	Continue our work with the Youth Justice Service to reduce the risk of young people re-offending.
				Continue to work at the strategic level across Flintshire and Wrexham to tackle re-offending across the area
				We will continue to support the YJS to provide diversionary activities and interventions, including support for young people who misuse substances, to change their behaviour their behaviour and reduce the risk of them re-offending

2011/2014 Action Plans

Priority 5 – Reduce the harm that substance misuse causes to communities, families and individuals

How will we measure success ?

Outcome 1 : Our area <u>is</u> a safe place to live work and visit (reducing crime)			
Strategic priority	Flintshire priority	Wrexham priority	Indicator
Reduce the harm that substance misuse causes to communities, families and individuals	MEDIUM	MEDIUM	Achieve a waiting time of not more than 10 working days between assessment and treatment. % of young people referred from Youth Justice Service commencing an agreed care plan no later than 10 working days from completion of the assessment.

Where are we now ?

- Co-ordination of the work to tackle and reduce substance misuse in Flintshire and Wrexham is undertaken by the respective Substance Misuse Action Teams (SMAT). Each SMAT has a local commissioning strategy based on the Welsh Government's ten year substance misuse strategy "Working Together to Reduce Harm"
- Both Flintshire and Wrexham have been achieving the national targets over the period of the last plan.

2011/2014 Action Plans

Priority 5 – Reduce the harm that substance misuse causes to communities, families and individuals

Preventing harm

By March 2014 we will	Indicator	Flintshire Baseline 2010/11	Wrexham Baseline 2010/11	Key actions
... help children & young people resist, reduce or delay substance misuse by educating them of the damage that it can cause to their health, their families and the wider community	Number of young people attending substance misuse education activities	6490	TBC	We will commission and performance manage services to deliver a range of education and early intervention initiatives to young people

2011/2014 Action Plans

Priority 5 – Reduce the harm that substance misuse causes to communities, families and individuals

Tackling availability and protecting individuals

By March 2014 we will	Indicator	Flintshire Baseline 2010/11	Wrexham Baseline 2010/11	Key actions
... reduce the inappropriate availability of alcohol to young people	Percentage of test purchases undertaken by young people working with Trading Standards which result in a sale	TBC	12% ⁵ (33%) ⁶	We will support licensing enforcement and education activity focused on reducing underage sales of alcohol at on and off licences and proxy purchasing
				We will promote and support educational campaigns to target proxy sales, and other forms of inappropriate supply of alcohol to young people

⁵ Off sales

⁶ On sales

2011/2014 Action Plans

Priority 5 – Reduce the harm that substance misuse causes to communities, families and individuals

Supporting substance misusers

By March 2014 we will	Indicator	Flintshire Baseline 2010/11	Wrexham Baseline 2010/11	Key actions
... support substance misusers through the provision of effective treatment and other services	% waiting no more than 10 working days waiting time between referral and assessment.	79.8%	57%	We will commission and performance manage services to deliver a range interventions including, where appropriate, advice and information, drop-ins, day care, residential rehabilitation, recovery, after care and support services.
	% waiting no more than 10 working days waiting time between assessment and treatment.	96.4%	97.3%	

2011/2014 Action Plans

Priority 5 – Reduce the harm that substance misuse causes to communities, families and individuals

Supporting families

By March 2014 we will	Indicator	Flintshire Baseline 2010/11	Wrexham Baseline 2010/11	Key actions
... reduce the risk of harm to children and adults as a consequence of a parents, partners or child's substance misuse	the number of young people who access the service	TBC	TBC	We will commission and performance manage services to deliver a range of support to young carers, siblings and families of substance misusers

2011/2014 Action Plans

Priority 6 – Tackle hate related crime and disorder and encourage reporting

How will we measure success ?

Outcome 1 : Our area <u>is</u> a safe place to live work and visit (reducing crime)			
Strategic priority	Flintshire priority	Wrexham priority	Indicator
Tackle hate related crime and disorder and encourage reporting	MEDIUM	MEDIUM	Total number of hate related crimes and incidents reported

Where are we now ?

- A key part of the approach to tackling hate related crime is to increase victim's confidence in, and access to, reporting. Wrexham CSP has worked with colleagues in Community Cohesion to improve reporting over a number of years; supporting victims of hate crime and dealing with perpetrators. This has led to an increase in incidents reported by these means and also of cases with a co-ordinated multi-agency response
- Flintshire has a lower rate of hate crime reporting to police than its most similar partnerships, while Wrexham's rate of reporting is higher than the most similar partnerships average.

2011/2014 Action Plans

Priority 6 – Tackle hate related crime and disorder and encourage reporting

Hate crime

By March 2014 we will	Indicator	Flintshire Baseline 2010/11	Wrexham Baseline 2010/11	Key actions
.... increase the confidence that victims have to report hate crimes	Total number of hate related crimes and incidents reported	52	103 (54) ⁷	We will continue to participate in strategic planning and operational activity to improve community cohesion, support victims of hate crime and deal with perpetrators.
				We will work to Increase opportunity and accessibility for victims to report hate crime at third party reporting centres in Wrexham and through promotion of 'Safer Wales' in Flintshire ⁸
				We will continue to support community cohesion teams to deliver targeted campaigns and publicity aimed at increasing awareness, supporting victims and bringing perpetrators to justice

⁷ 54 cases were reported to Third Party Centres in Wrexham between Jan and Dec 2010 in addition to those reported to the police

⁸ Third Party Reporting Centres are community venues at which to report hate crime and 'Safer Wales' is an anti-hate crime project to encourage and enable victims to report abuse.

2011/2014 Action Plans

Priority 7 – Engage with the community to provide re-assurance and public confidence

How will we measure success ?

Outcome 2 : Our area feels like a safe place to live work and visit

Strategic priority	Flintshire priority	Wrexham priority	Indicator
Engage with the community to provide re-assurance and increase public confidence	HIGH	HIGH	% respondents to NWP “confidence survey” who consider crime is being dealt with by police & their local council

Where are we now ?

- Between 2008 and September 2009 however, the BCS showed concern about ASB falling from over 11% to 9%, concern about drug use falling from 27% to 18% and perceptions of drunk and rowdy behaviour remaining steady around 22% to 23%.
- However, despite continued reductions in crime and anti social behaviour between 2009 and 2010, the British Crime Survey (BCS) for North Wales showed that between September 2009 and September 2010,
 - the percentage of people concerned about ASB in their area increased from 9% to 11%,
 - those concerned about drug use and dealing rose from under 18% to 21%, and
 - those concerned about drunk and rowdy behaviour rose from under 22% to over 27%.

2011/2014 Action Plans

Priority 7 – Engage with the community to provide re-assurance and public confidence

Community re-assurance

By March 2014 we will	Indicator	Flintshire Baseline 2010/11	Wrexham Baseline 2010/11	Key actions
... develop, implement, monitor and review a programme of public re-assurance	% of respondents to North Wales Police local confidence survey who believe that crime and anti-social behaviour is being dealt with by the police and their local council	83%*	87%*	Co-ordination of key campaigns in response to issues identified by the CSP action groups. For example, seasonal campaigns and operational campaigns to highlight key issues and support crime reduction initiatives and reinforce positive messages about safety in the area.
				Develop, implement, monitor and review a programme of community consultation and engagement. Including public access to CSP information; community networks; Web based communications and involving the community in CSP campaigns and consultation exercises.
... continue to develop a community which is resilient to violent extremism	Not applicable	N/A	N/A	Develop, implement, monitor and review the local application of the "Prevent" element of the Government's anti-terrorism strategy in line with Home Office Guidance

⁹ December 2010 North Wales Police local public confidence survey

Delivering a safer community

Flintshire & Wrexham Community Safety Partnerships

Community Safety Partnerships (CSP) are the overarching statutory bodies responsible for tackling crime and disorder. The Partnerships meet on a quarterly basis to set the local strategy and priorities, monitor performance, and recommend allocation of funding.

To support the partnerships in the delivery of the strategy, a number of strategic and action groups are in place, including specific cross-boundary multi-agency initiatives, that focus on the identified priorities.

The Community Safety Partnerships continue to work closely at the strategic level across a number of issues such as reoffending and substance misuse.

Both partnerships are committed to increased collaboration and a willingness to seek further opportunities for joint working within the context of current sub-regional and regional developments in North Wales.

Community Safety Teams

Each local authority area has a dedicated Community Safety Team to support the work of their CSP in developing, co-ordinating, implementing and monitoring the local strategy and action plans. The inter-agency teams include staff from the local authority, police, as well as staff who are funded by the Welsh Government and Home Office

Working in partnership

Community safety issues overlap and link to many aspects of agency, department, and organisation business. This is reflected in Section 17 of the Crime & Disorder Act 1998 (and maintained in subsequent amendments)

“It is the duty of each authority to exercise its various functions with due regard to the likely effect on, and the need to do all that it reasonably can to prevent

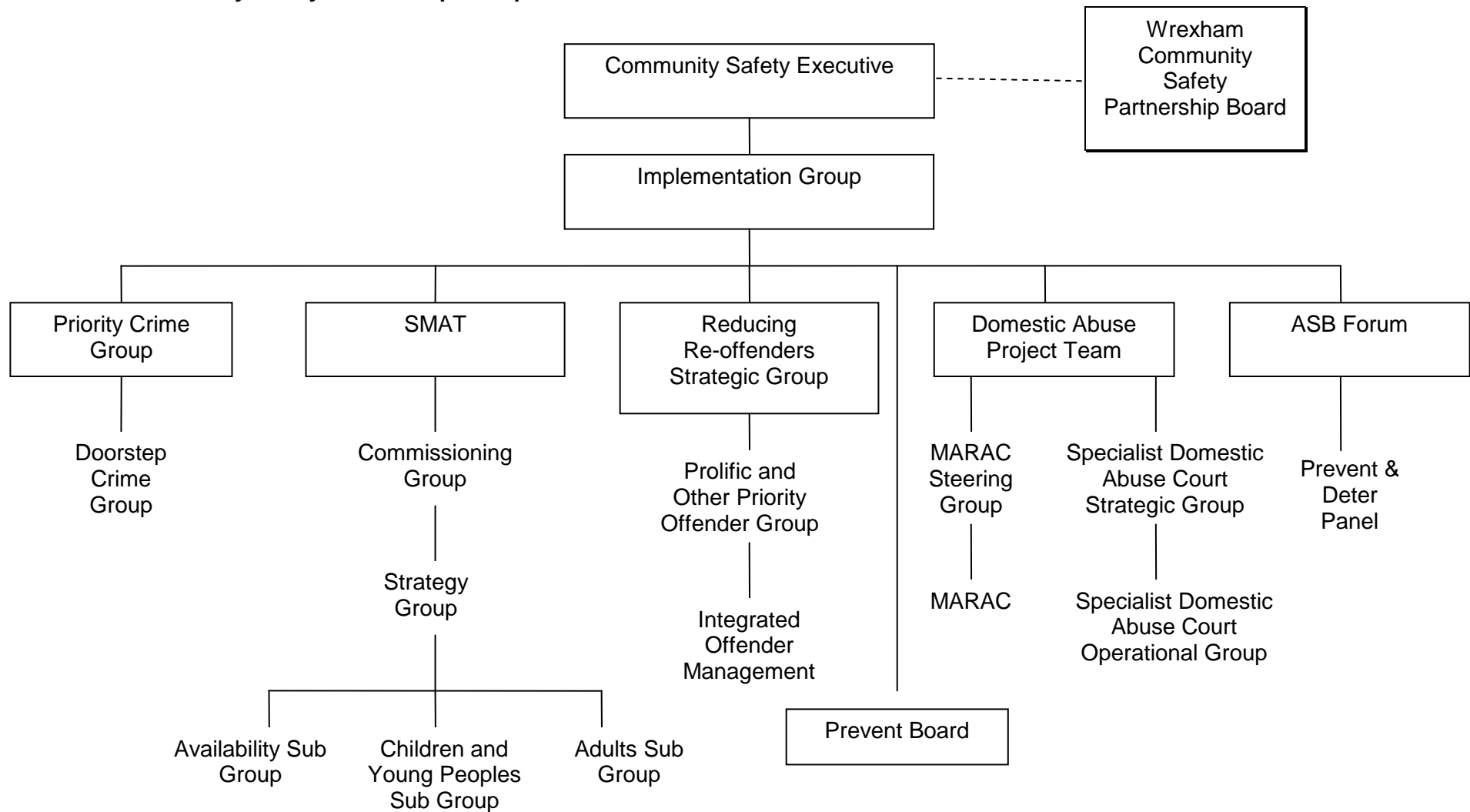
(a) crime and disorder in its area (including anti-social and other behaviour adversely affecting the local environment); and

(b) the misuse of drugs, alcohol and other substances in its area.”

The work of a CSP demands effective joint working across and between partner agencies. A key aspect of the Community Safety Team work is promoting co-ordinated working and liaison with Council departments, partner agencies and other relevant multi agency groupings and key strategic partnerships both within and across local authority boundaries to achieve the outcomes identified in this document.

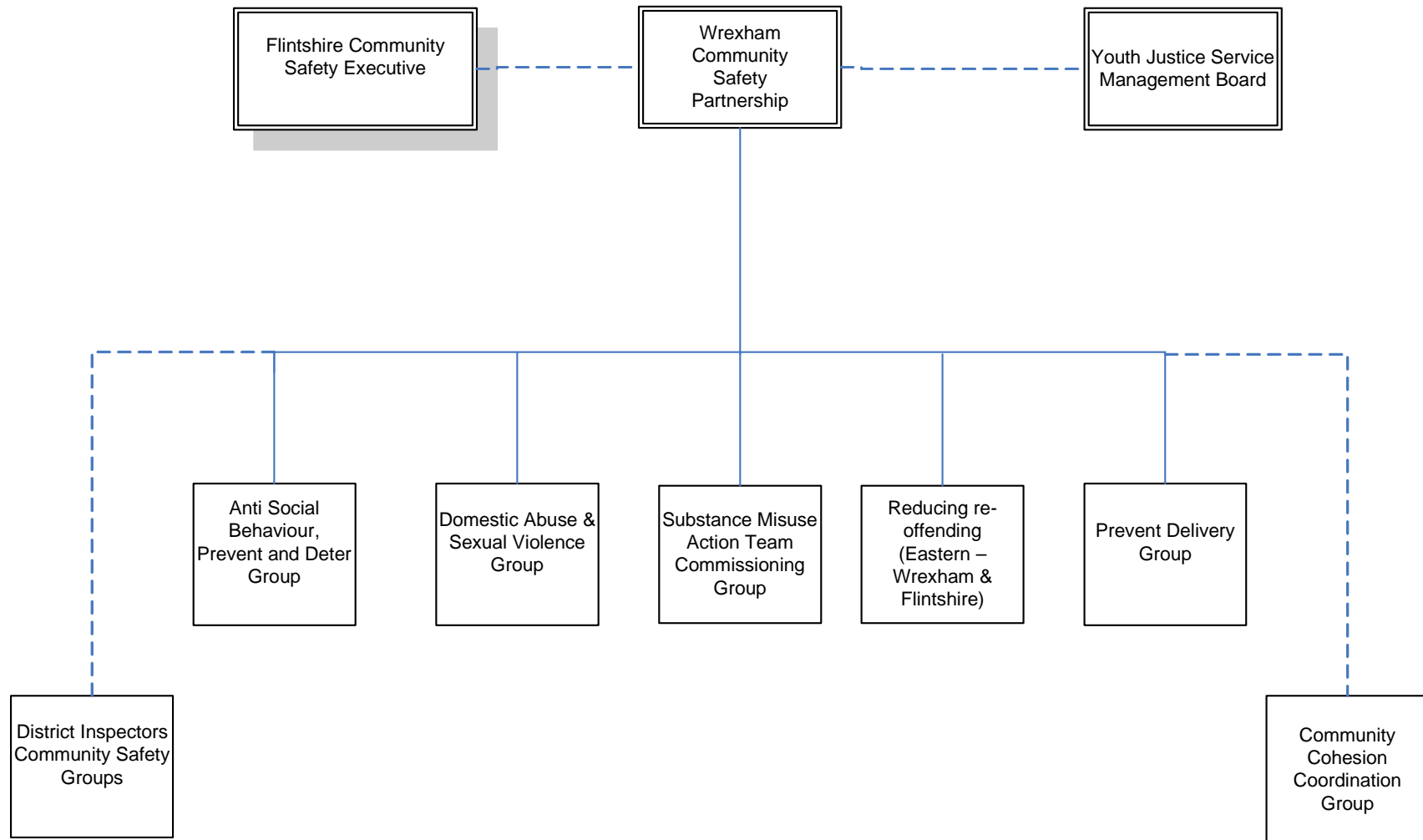
Delivering a safer community

Fig 1 Flintshire Community Safety Partnership Groups



Delivering a safer community

Fig 2 Wrexham Community Safety Partnership Groups



Delivering a safer community

Conclusion

This plan sets out Flintshire and Wrexham Community Safety Partnerships' shared strategic priorities - they reflect local concerns affecting both our communities and address national requirements.

Our Partnership Plan is supported by a robust Performance Management Framework, which will monitor how well the Partnerships delivers the plan and achieves the desired outcomes.

The Partnerships are also committed to monitoring joint progress to ensure achievement of desired outcomes, to reduce the levels of crime and disorder and improve community safety for those who live, work or visit Flintshire or Wrexham

